



# E. Faye Harris

MAR 13, 2008



Scan to Visit

# Table of Contents

<b>Obituary</b> .....	Page 3
<b>Tribute Wall</b> .....	Page 4
<b>Media</b> .....	Page 5



## **E. Faye Harris**

MAR 13, 2008

**E** Faye Harris August 3, 1920 to March 13, 2008 A native of Nebraska and a graduate of Crawford High School in 1928, Faye had her first glimpse of the Pacific Northwest when, as an Army Nurse during WWII, she was transferred to Fort Lewis for overseas duty with the 373rd Army General Hospital. It was after this first glimpse, she decided she wanted to make the Northwest her home. After honorable discharge in 1945, she went to work for the Veteran's Administration in Minneapolis, MN. In 1949 she obtained a transfer to the VA Hospital at American Lake and worked there until retiring in 1975. Although interested in art her whole life, she didn't start painting in oils until 1951. Other than several beginning art classes in college, she had no formal training. Several day long workshops and watching TV art classes helped her improve her painting techniques. Faye made the Lakewood, WA area her home and is known on many of the local golf courses...golf being her first love and painting her second. Faye is interred at Mt. View Cemetery in Tacoma, WA. At her request, no service will be held.



## Tribute Wall

E. Faye Harris



**Tonya Smith** shared 2 photos to the **Tribute Wall** album.

I found this painting at my local flea market for \$ 3. I absolutely love it. ❤️

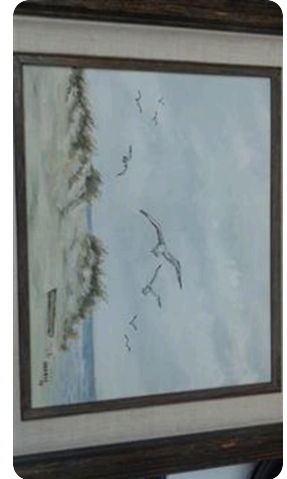
November 5 at 8:18 AM





Tonya Smith shared 2 photos to the **Tribute Wall** album.

November 5 at 8:18 AM





# Memories only last if you share them

Join us in honoring E. by contributing to a collection of shared memories.



Scan to Visit